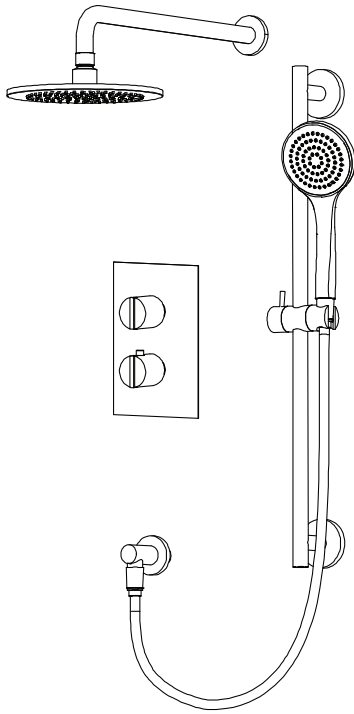


ECH.7100 | Two Output Shower W/ Rain Shower, Hand Shower & Slide Bar



COMPONENTS

- HH1012SA - 16" Shower Arm
- HH1002A - 8" Shower Head
- ECH.4000T - Shower Trim
- JVH.4420F - Shower Valve
- HH5100 - Hand Shower
- ORO.5502 - Wall Elbow
- HH.150EM - 1.5m Hose
- ORO.601001A - Slide Bar

SHOWER VALVE:

- Thermostatic shower valve w/ stops
- Turn bottom handle to set temp.
- Top handle controls water diversion
- Includes 15109 non-shared cartridge

SHOWER HEAD:

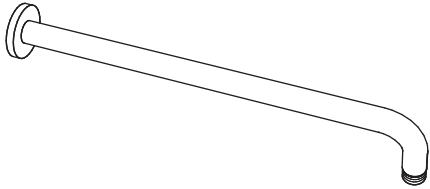
- Solid brass construction
- 11 LPM flow rate

HAND SHOWER W/ SLIDE BAR & ELBOW:

- Solid Brass constr. w/ ABS hand shower
- Hand shower flow rate = 6 LPM
- 1/2" male elbow connection
- With back flow prevention check valve

See individual component specification sheets on following pages for further details.

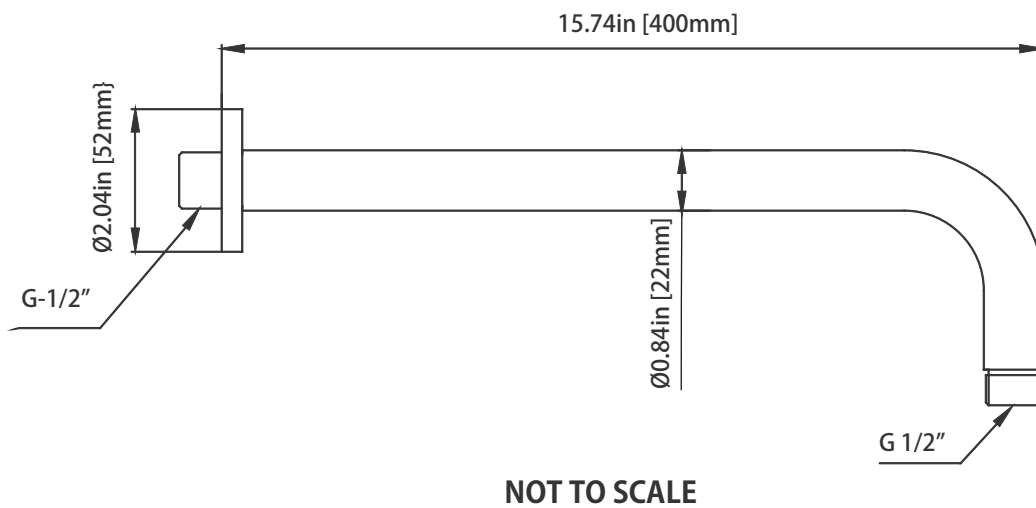
HH1012SA | Round Shower Arm - 400mm - 16"



SPECIFICATIONS:

- Solid Brass Shower Arm
- With Sliding Flange

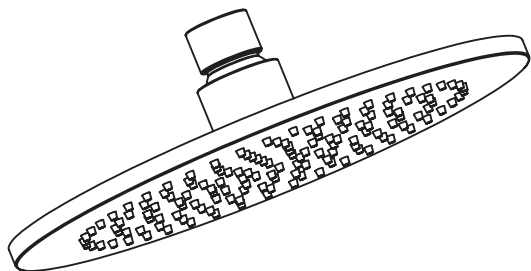
Technical Diagram



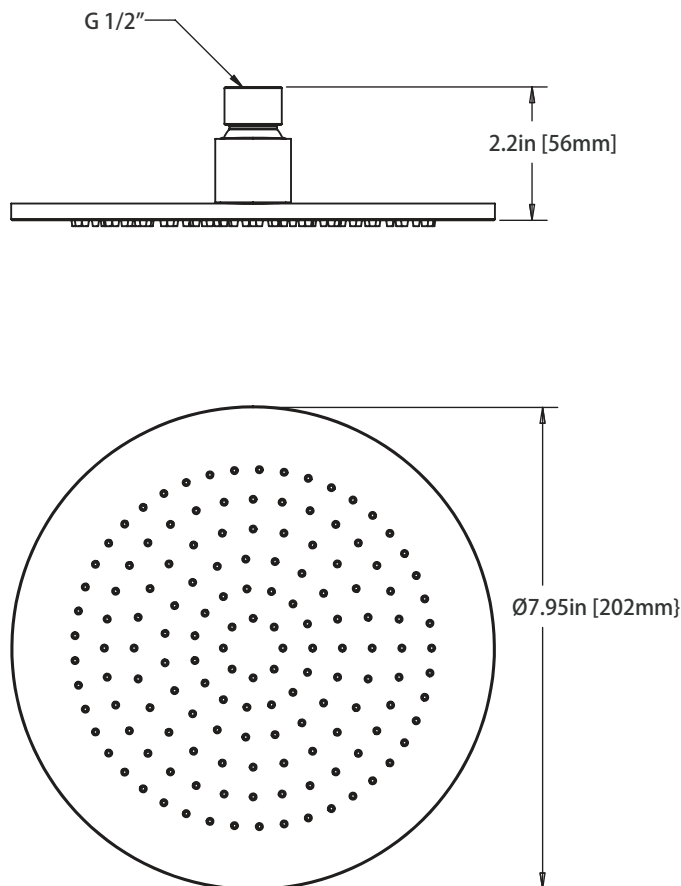
HH1002A | 8" Brass Rain Shower

SPECIFICATIONS:

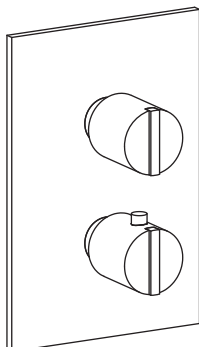
- Solid Brass Shower Head
- Scrub rubber nozzles to easily clean water sediment
- 11 PM Flow Rate



Technical Diagram



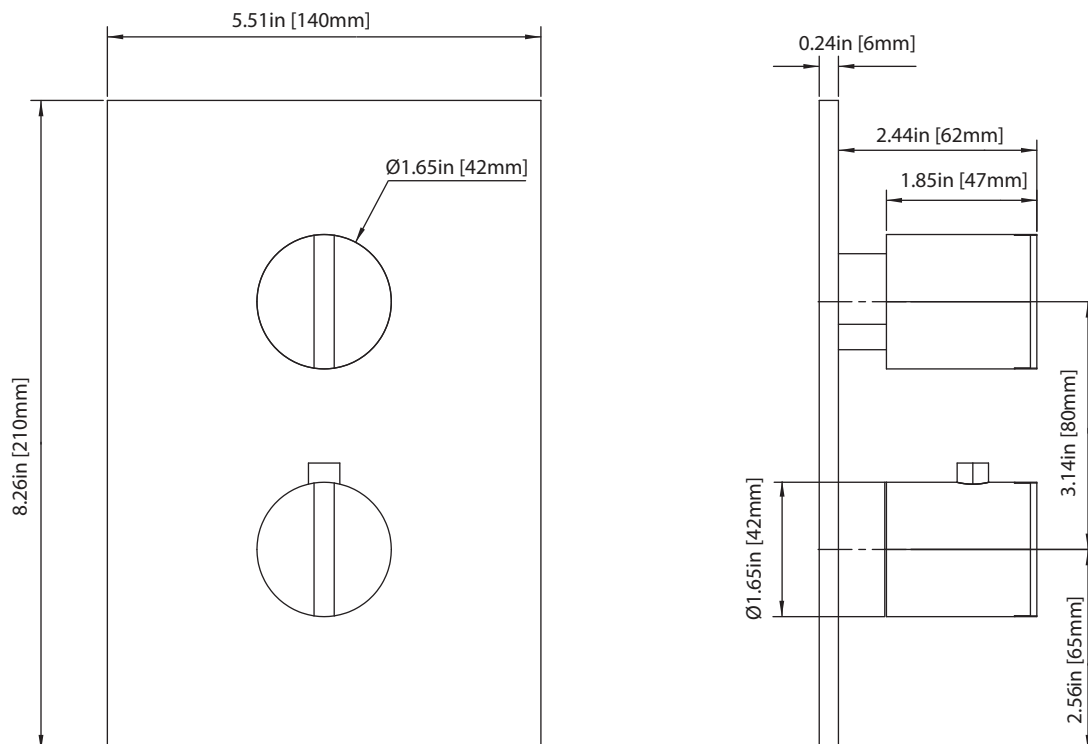
ECH.4000T | Thermostatic Shower Trim



SPECIFICATIONS:

- Solid Brass construction
- Valve not included - trim only
- Turn bottom handle to control temperature.
- Turn top handle to divert water & control volume

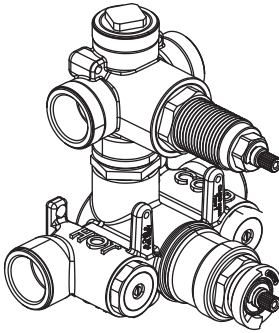
Technical Diagram



JVH.4420F | 3/4" Thermostatic Mixer Valve - 2 Output Page 1 of 2

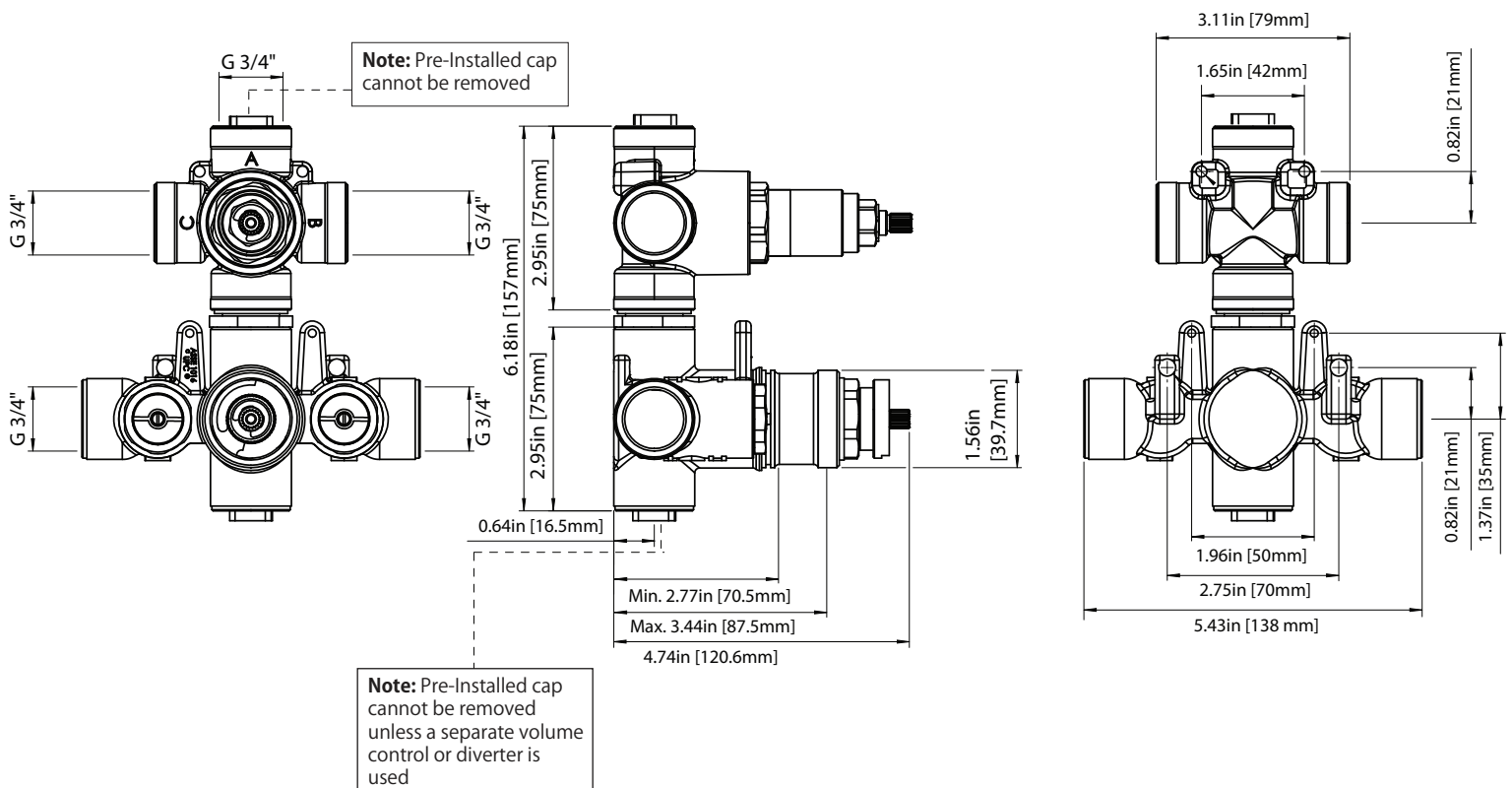
SPECIFICATIONS:

- Turn bottom knob to control temperature.
- Turn top knob to control water flow.
- Thermostatic Valve Flow Rate - 22 LPM @ 3 BAR
- Extension Available - JVH.4101E**



! A separate volume control is **not** needed to turn water supply off. Volume control functionality is integrated within this valve.

Technical Diagram



JVH.4420F | 3/4" Thermostatic Mixer Valve - 2 Output Page 2 of 2

TWO OUTPUT - NO SHARED PORT OPERATION

Diverter Cartridge # - **15109** (Included)

Total 3 Positions as defined below, with **only** 1 port active at one time.

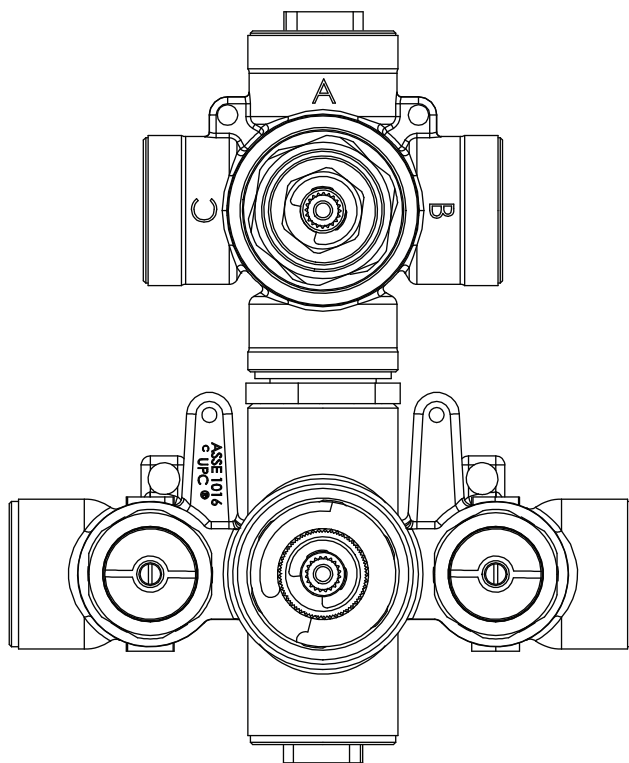
- Position 0 - Off - No Water Flow
- Position 1 - Output B Activated
- Position 2 - Output C Activated

TWO OUTPUT - SHARED PORT OPERATION

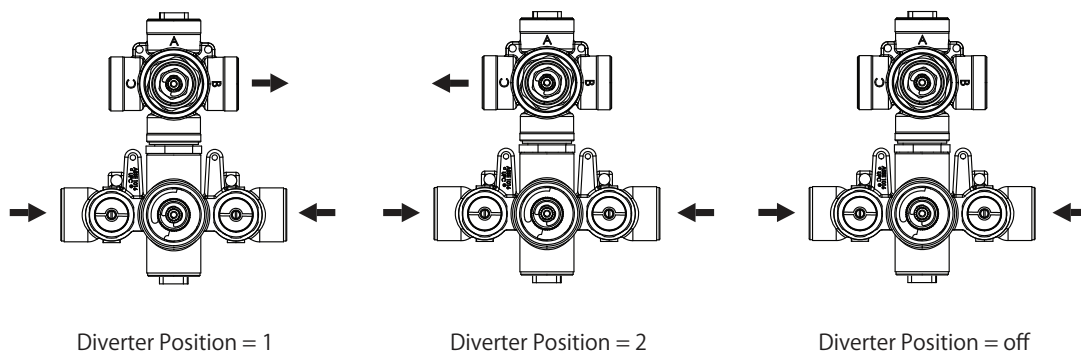
Diverter Cartridge # - **15103** (Not Included)

Total 4 Positions as defined below, with 2 ports active at one time.

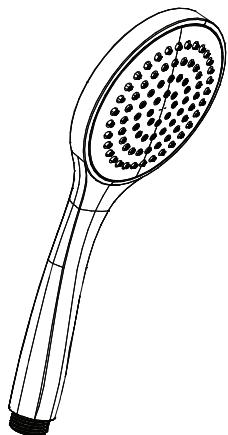
- Position 0 - Off - No Water Flow
- Position 1 - Output B Activated
- Position 2 - Output B+C Activated
- Position 3 - Output C Activated



Water Diversion Diagram



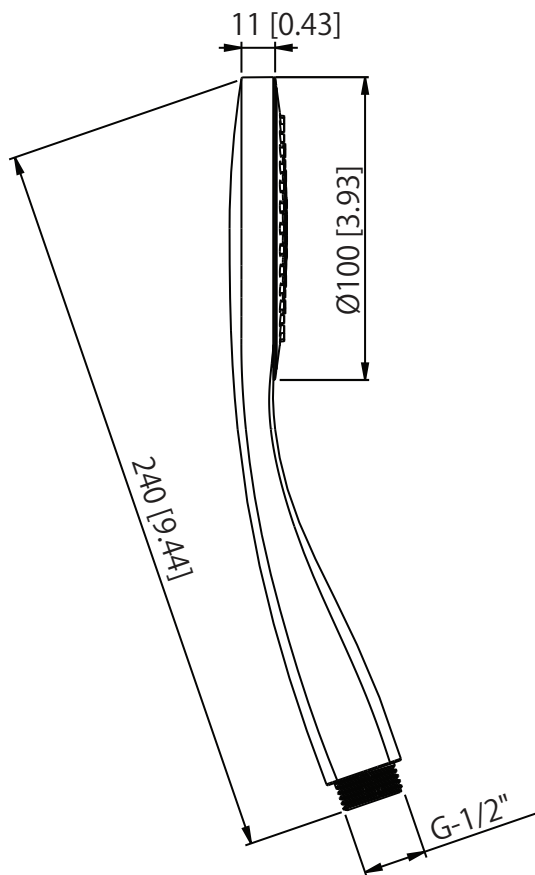
HH5100 | 100mm Single Function Hand-Shower



SPECIFICATIONS:

- ABS Construction
- Scrub nozzles to easily clean water sediment
- 6 LPM Flow Rate
- Includes backflow prevention check valve

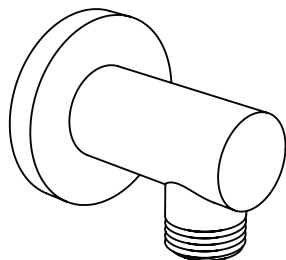
Technical Diagram



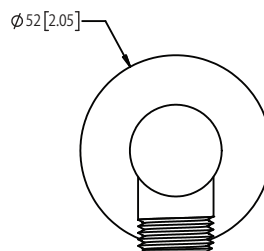
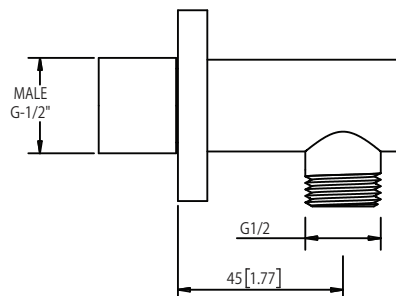
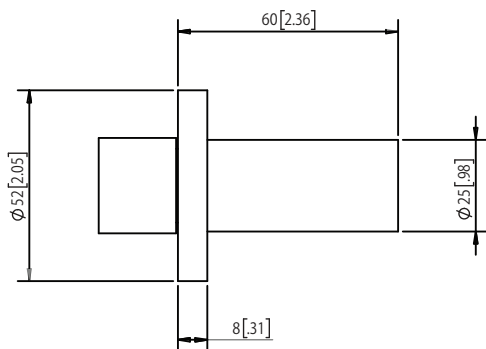
ORO.5502 | Wall Elbow Outlet

SPECIFICATIONS:

- Solid Brass construction
- 1/2" male connection with adjustment
- Includes check valve with back-flow prevention



Technical Diagram



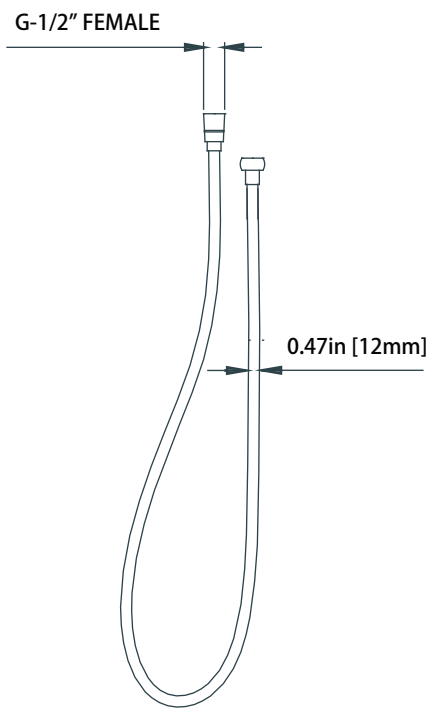
HH.150EM | Easy Maneuver Hose



SPECIFICATIONS:

- Stainless steel construction
- G-1/2" connection
- 1.5m length

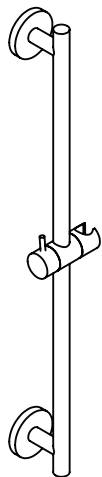
Technical Diagram



ORO.601001A | Slide Bar

SPECIFICATIONS:

- Solid Brass Construction
- Easy front of wall installation



Technical Diagram

