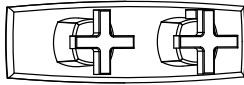


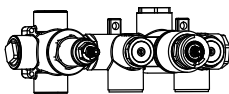
## SER.2717 | Horizontal Thermostatic Mixer with 2 Output Valve - 3/4"

### SPECIFICATIONS:

- Turn right knob to control temperature.
- Turn left knob to control water flow.
- Thermostatic Valve Flow Rate - 22 LPM @ 3 BAR
- Extension Available - JVH.4101E\*\*
- 2 Output

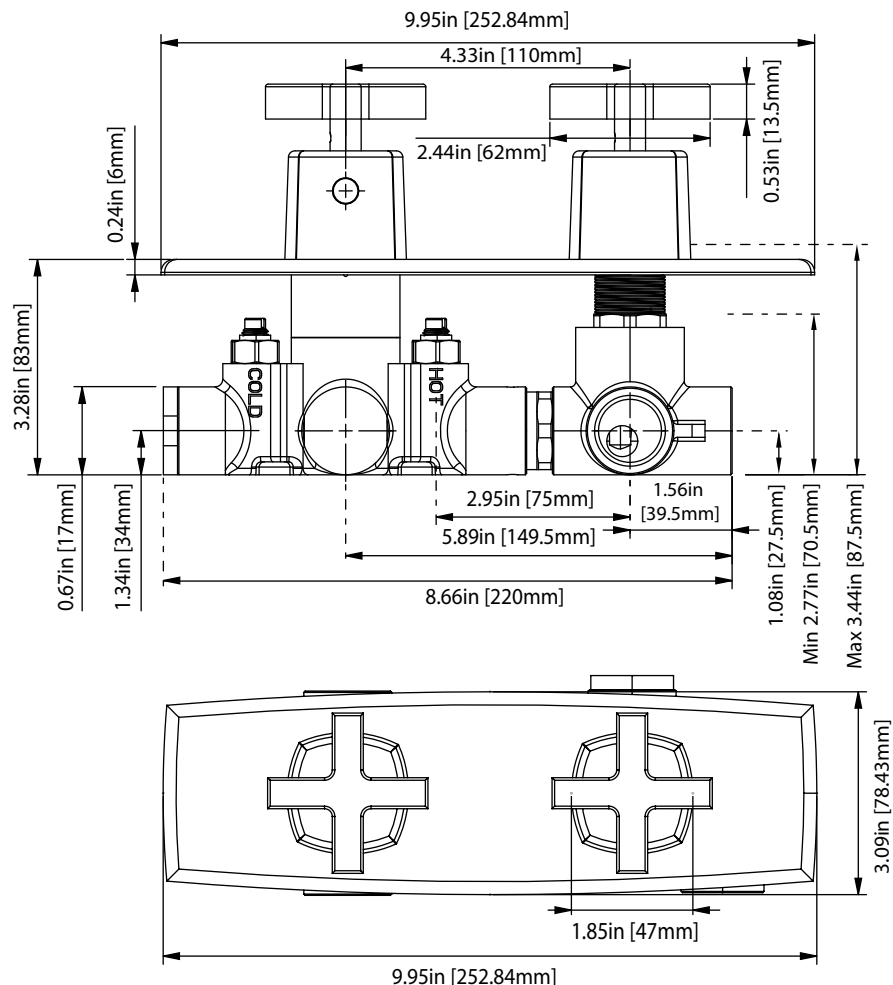


+

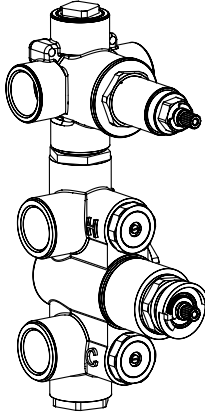


VALVE [JVH.2717F] + Trim [SER.2693T\*\*]

### Technical Diagram



JVH.2717F | 3/4" Thermostatic Mixer Valve - 2 Output Page 1 of 2

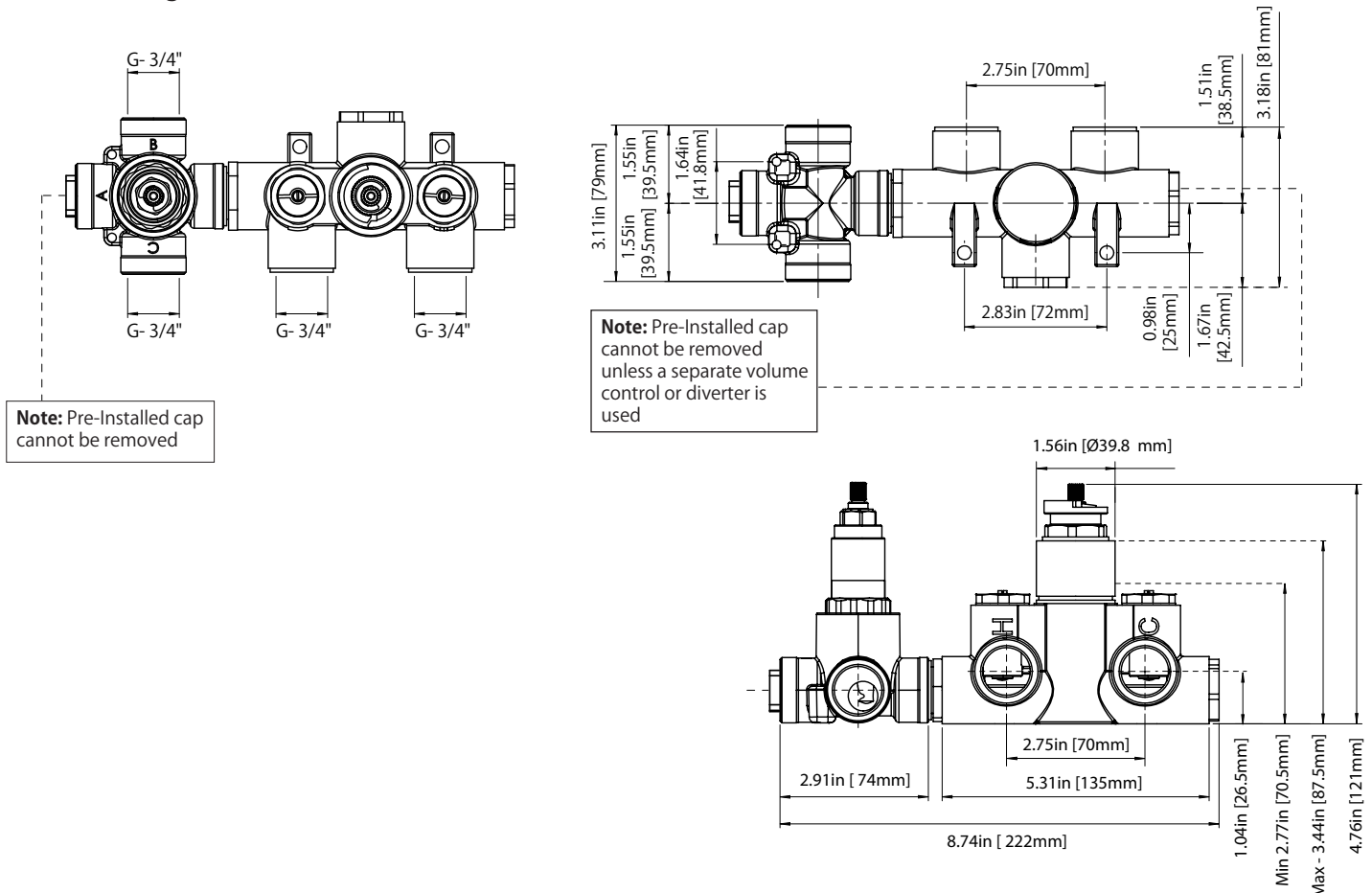


**SPECIFICATIONS:**

- Turn bottom knob to control temperature.
- Turn top knob to control water flow.
- Thermostatic Valve Flow Rate - 22 LPM @ 3 BAR
- Extension Available - JVH.4101E\*\*

**!** A separate volume control is **not** needed to turn water supply off. Volume control functionality is integrated within this valve.

**Technical Diagram**



---

## JVH.2717F | 3/4" Thermostatic Mixer Valve - 2 Output Page 2 of 2

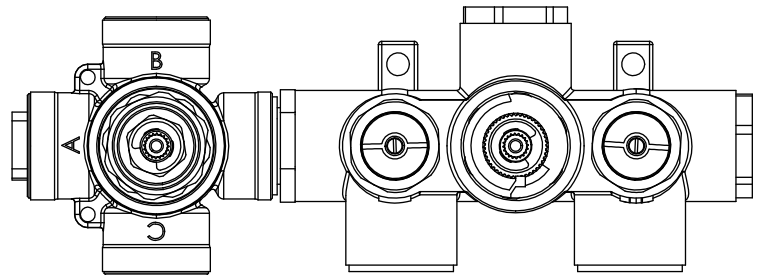
### **TWO OUPUT - CAL-GREEN - NO SHARED PORT OPERATION**

---

Diverter Cartridge # - **15109** (Included)

Total 3 Positions as defined below, with **only** 1 port active at one time.

- Position 0 - Off - No Water Flow
- Position 1 - Output B Activated
- Position 2 - Output C Activated



### **TWO OUPUT - SHARED PORT OPERATION**

---

Diverter Cartridge # - **15103** (Not Included)

Total 4 Positions as defined below, with 2 ports active at one time.

- Position 0 - Off - No Water Flow
- Position 1 - Output B Activated
- Position 2 - Output B+C Activated
- Position 3 - Output C Activated